

Recycling cart Tips and tricks

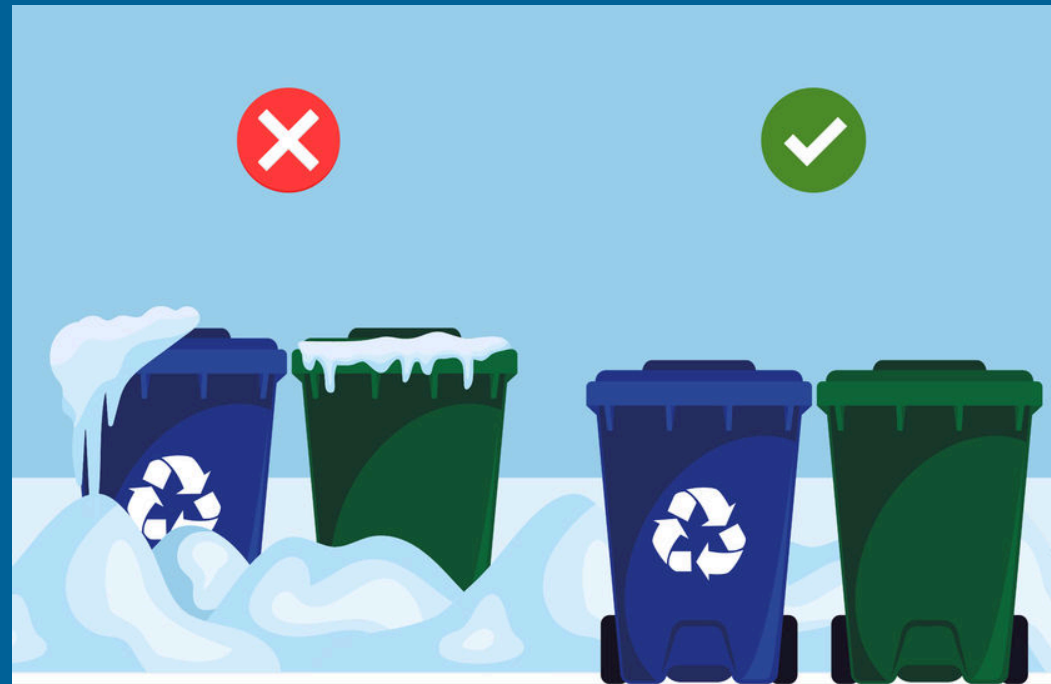


How to use your cart:

- Make sure the cart lid opens toward the street.
- Place the cart at least 3 feet (1 metre) away from obstacles.
- Set the cart on a flat surface to help ensure safe collection.
- Keep the cart lid completely closed.
- Place carts away from the street and cars.
- For rural one-way roads, please place carts on the designated collection side of the road.

How to place your cart in the winter:

- Place carts at the end of your laneway (not on the road).
- Ensure carts are visible and accessible for collection.
- Clear snow and ice from lids.
- Place recycling carts in front of snowbanks.
- Place carts on a flat surface.



Place recycling carts in front of snowbanks and ensure the lids are clear from snow.

Benefits of recycling carts:

- ✓ Recycling carts, with lids fully closed help minimize litter and reduce odour and pest issues.
- ✓ Increased storage capacity between collections allows for more space for your recyclables.
- ✓ Collection systems with recycling carts create a safer working environment for workers and reduce the risk of injury and accidents.