



2026 | Collection Calendar

GARBAGE, YARD WASTE, GREEN BIN & RECYCLING



AMHERSTBURG

EST. 1796

amherstburg.ca



Below are some of the accepted materials for curbside recycling:



Paper



Cardboard and boxboard



Foam packaging



Paper laminate packaging



Glass containers



Plastic containers

Looking for Something Specific?

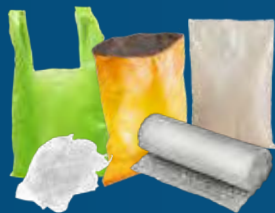
Index

Recycling Guide	Page 1
Green Bin Guide	Page 2
Garbage & White Goods	Page 3
Garbage Collection Route Maps .	Page 4
Yard Waste Collection	Page 5
Yard Waste Collection Maps	Page 6
Grow Green with the Green Bin . .	April
Lithium-Ion Battery Safety.	May
No Grease Down Drain	June
Basement Flooding Subsidy	July
Public Drop Off Depots	August
Green Bins Are Coming	September
Hazardous Waste.	October
Green Bin Collection Starts . .	November
Green Bin Winter Tips	December
Christmas Trees/Snow Removal . .	January 2027
EWSWA Social Media	January 2027

**For more information visit the
Essex-Windsor Solid Waste Authority
website at ewswa.org**



Metal



Flexible plastics



Cartons

***For a full list of accepted recyclables and recycling tips:
circularmaterials.ca/amherstburg***

Starting on January 1, 2026, Amherstburg will transition to a single-stream recycling system.

This means you can combine all recyclables into your recycling cart.



Learn more about your new recycling cart program:
circularmaterials.ca/amherstburg



Contact GFL for recycling and collection questions:

1-844-415-4351

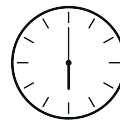
WErecycling@gflenv.com

1



Set your recycling cart so that the wheels are away from the curb (towards your home, and the lid opens to the street).

2



Place your recycling at the curb by 6:00 a.m. on your scheduled day.



ewswa

THE GREEN BIN GUIDE

ACCEPTABLE MATERIALS: All food waste (cooked, raw, bones, shells, nuts, rinds, pits and peels) is **ACCEPTED** in the Green Bin.



Fruits /
Vegetables



Meat / Poultry /
Seafood / Bones



Bread / Cereal / Pasta /
Noodles / Rice



Eggs / Eggshells



Nuts / Seeds /
Lentils / Beans



Dry Baking Ingredients /
Herbs / Spices



Dairy Products /
Yogurt / Butter / Cheese



Baked Goods / Candy



Coffee Filters /
Grounds / Paper Tea Bags



Fats / Oils / Grease (FOG)
(must be hardened / solid)



You must
use the
EWSWA
Green Bin
to receive
collection.



COMPOSTABLE BAGS

(CERTIFIED BAGS ONLY)

If you are using
compostable bags
to line your Kitchen
Catcher or Green Bin,
only purchase bags
with the BPI/BNQ
certification
logos.



COMPOSTABLE
www.compostable.info



FOR COLLECTION IN MUNICIPAL
PROGRAMS, WHERE APPROVED.
POUR LA COLLECTE DANS LES
PROGRAMMES MUNICIPAUX, OÙ
APPROUVÉS, CERT #0000000



ACCEPTABLE MATERIALS: Food-soiled paper products are accepted in the Green Bin. Some examples:



Paper Towels
(used for food spills)



Paper Plates
(with leftover food)



Paper Egg Cartons
(with broken eggs)

PARK, POINT, SPACE



- **Park:** Green Bin 30 centimetres from curb/street
- **Point:** Arrows toward street
- **Space:** 1 metre away from other objects or containers

www.ewswa.org



Not Accepted in the Green Bin!

- Yard Waste
- Kitty Litter
- Pet Waste
- Cigarettes
- Plastic Utensils
- Diapers / Sanitary Products
- Cans / Glass / Styrofoam™
- Baby Wipes
- Stickers from fruit
- Chemical-Soaked Paper Towels

Amherstburg Garbage Collection

- Your garbage will be collected weekly. We request that you locate your street on the maps provided (see next page) and identify which day your street will receive weekly garbage collection. Look for these icons (on right).
- **Large Items & Furniture:** Will be picked up on your regularly scheduled garbage day (with the exception of white goods). Items such as box springs, mattresses, couches, chairs, toilets (separate tank from bowl), and similar materials can be put out on any regular garbage day.
- Garbage shall NOT exceed 45 lbs. (20kg) per container.
- All garbage is to be in a suitable container and at the roadside / curb the night **BEFORE** your collection day.
- **NON-COLLECTABLE Waste:** Waste that is deemed non-collectable includes: Ammunition, animal carcasses, animal waste, appliances, automotive parts, bricks, combustibles, chemical waste, computer equipment, concrete, construction & demolition waste, explosives, industrial waste, liquid waste, medical waste, metal items, pallets, paint products, renovation debris, syringes, televisions, and tires. These items are not garbage and will NOT be collected – **check index for Public Drop Off information.**
- If you have questions regarding your garbage collection please call the Town of Amherstburg at 519-736-3664.

Garbage Pail Icons



Acceptable Garbage Containers:



Plastic Bags

- TIED Commercial grade plastic bags only
- Recommended size: 26" X 36"
- Never put sharp objects in plastic bags

Metal or Plastic Cans

- Maximum 125L / 30 gal. capacity
- Maximum 78 cm/31" tall, 20" diameter
- 2 handles and a water tight lid

Herby Curby

- Call 519-948-5854
- www.herbycurby.com

Place garbage out the NIGHT BEFORE collection day.

Missed Garbage Collections

Missed collections are upsetting, but there is usually a reason why material was not collected as expected.

To ensure your materials are collected, please ensure they are:

- In acceptable containers
- Out the **NIGHT BEFORE** your collection day
- Within the weight limit of 20 kg (45 lbs)
- Not hidden behind a vehicle, snow bank, or other obstruction
- Free of prohibited content (e.g. hazardous or construction/renovation waste)
- Please refrain from placing garbage and recycle bins on sidewalks where possible.

Other reasons for missed collections are:

- Unacceptable containers, i.e. plastic shopping bags
- Not scheduled for collection that particular day
- Non-collectable waste i.e. computer equipment, televisions, renovation debris, animal waste, paint, medical waste, tires, concrete, appliances and metal items.

If an item is not collected for reasons other than the above, please contact GFL at 519-944-8009.

Please do not leave uncollected material at the curb while you are resolving the problem.



Please **REVIEW** the route maps on the next page to see when your garbage day will be. If you have any questions, call **Public Works** at 519-736-3664.

White Goods / Appliances:

White Goods are collected the **FOURTH** Thursday of each month with the exception of December, which will be collected on December 23, 2026.

Please call 519-736-3664 to be placed on a list for collection. **Deadline to schedule a pick up is the Friday before collection.**

White Goods include: stoves, fridges, freezers, washers, air conditioners, dryers, dehumidifiers, dishwashers, trash compactors, barbecues, and microwaves.

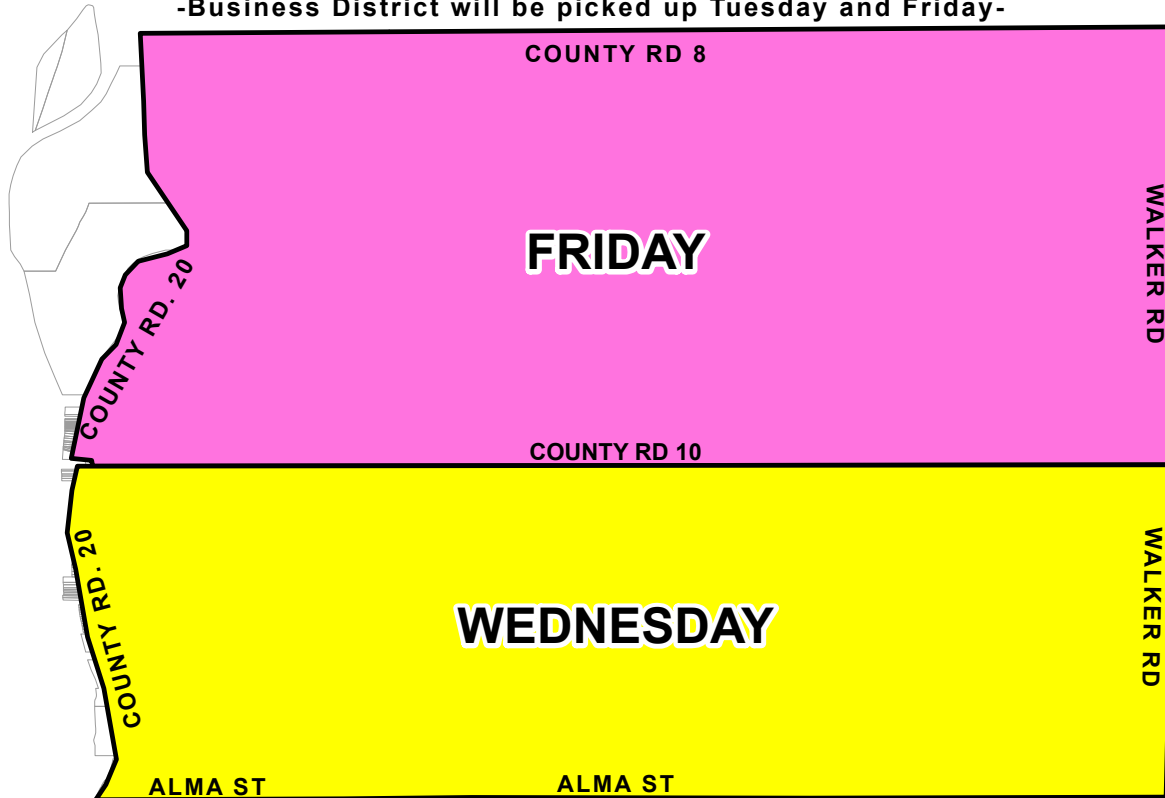
NOT ACCEPTED as White Goods: televisions, computers, and any other electronic items.

There is NO charge for this service.



2026 Garbage Collection Map Schedule

-Business District will be picked up Tuesday and Friday-



BOBLO

TUESDAY

FRYER ST

FRIDAY

MELOCHE RD

LOWES SDRD

MONDAY

WALKER RD

SMITH RD

MONDAY GARBAGE

TUESDAY GARBAGE

WEDNESDAY GARBAGE

FRIDAY GARBAGE

If you have any questions please contact Public Works at 519-736-3664.

Yard Waste Information

Amherstburg offers roadside yard waste collection.

Yard Waste Roadside Collection:

- **Yard Waste Collection:** Roadside collection is provided on **ALTERNATING MONDAYS IN TWO (2) ZONES FROM APRIL TO DECEMBER**. Consult the Yard Waste Collection Route Maps (see next page) to determine your zone.
- If you are unsure what zone your residence is located in, please call the Public Works Department at 519-736-3664.
- Please ensure that your yard waste is placed at the roadside the **NIGHT BEFORE** your collection day.
- The only **ACCEPTABLE** containers are: Paper Yard Waste Bags, Cardboard Boxes, Garbage Cans / Pails. Note: cardboard boxes are not returned. **Plastic bags containing yard waste will NOT be collected.**
- Tree trimmings must be cut and bundled into four foot lengths and shall be no larger than two feet in diameter. **Unbundled tree trimmings will NOT be collected.**
- Containers and tree trimmings bundles are restricted to weights of 45lbs. (20kg) or less.
- If your pick up falls on a holiday, your yard waste will be collected the Saturday prior to the holiday.



Yard Waste Roadside Collection:

Acceptable yard waste containers shown below.



For more information call 519-736-3664.

Yard Waste Includes:

Tree & Hedge Trimmings:

Tied in bundles (max. length 4ft. / max. diameter 2 ft.)

Garden Waste / Leaves:

Flowers, vegetables, plants, fruit, and leaves should be put in cardboard boxes, paper yard waste bags, or garbage pails/cans. Leaves raked to the roadside will **NOT** be picked up.

Grass Clippings: Grass clippings are considered **YARD WASTE** and will only be collected at the roadside on Yard Waste Days. Please place in acceptable containers weighing no more than 45lbs. (20kg).

Large Trees & Shrubs: Regular yard waste collection will take branches and brush up to 3" in diameter, if cut and bundled into bundles no larger than 4ft x 2ft in diameter. Bundles must weigh less than 45lbs. (20kg).

Larger items can be taken to one of the Essex-Windsor Solid Waste Authority's Public Drop Off Depots (check the index for more information on these locations).



Acceptable yard waste containers include:

paper yard waste bags, cardboard boxes, garbage cans / pails.

Cardboard boxes are not returned.

Christmas Trees

Prior to placing your Christmas trees at the roadside, please remove ornaments, bags and stands.

Please have your Christmas trees out for collection at the roadside on the following dates:

- Monday, January, 4th, 2027
- Monday, January, 11th, 2027



This is for **Christmas Trees ONLY**. Yard Waste will **NOT** be collected.

YARD WASTE ICONS:

Look for the yard waste icons in the calendar to find your zone's roadside collection day.



Roadside Collection
North Zone



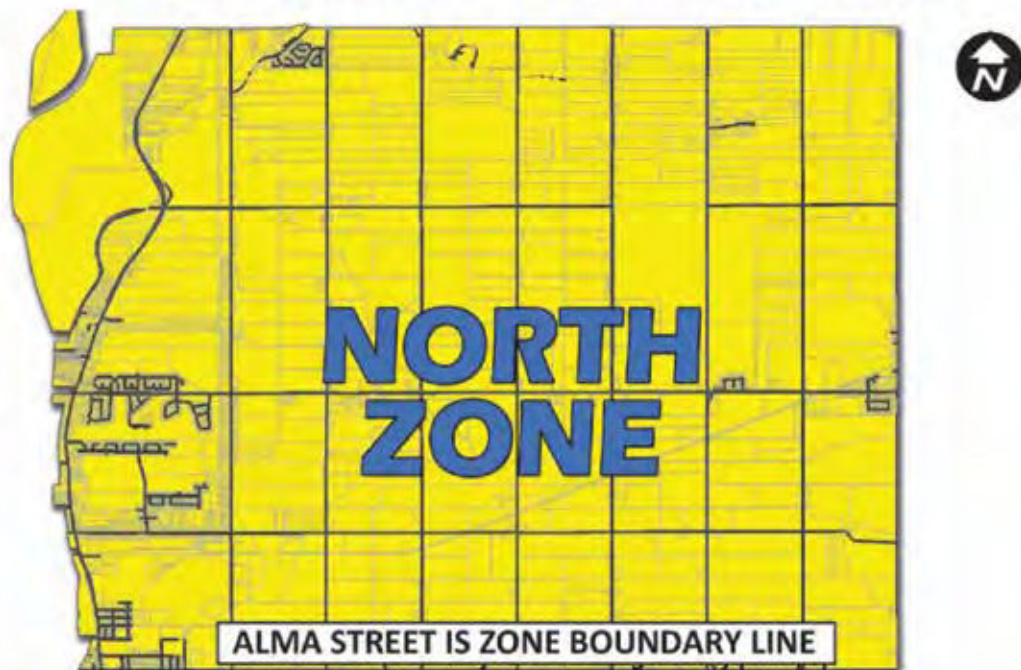
Roadside Collection
South Zone

No PLASTIC BAGS for yard waste!
(regular OR environmentally friendly).

2026 Yard Waste Roadside Collection - Route Maps

Each zone is collected on alternating Mondays.

Starts Monday, April 6th, 2026 / Last Collection November 30, 2026



Starts Monday, April 13, 2026 / Last Collection December 7th, 2026

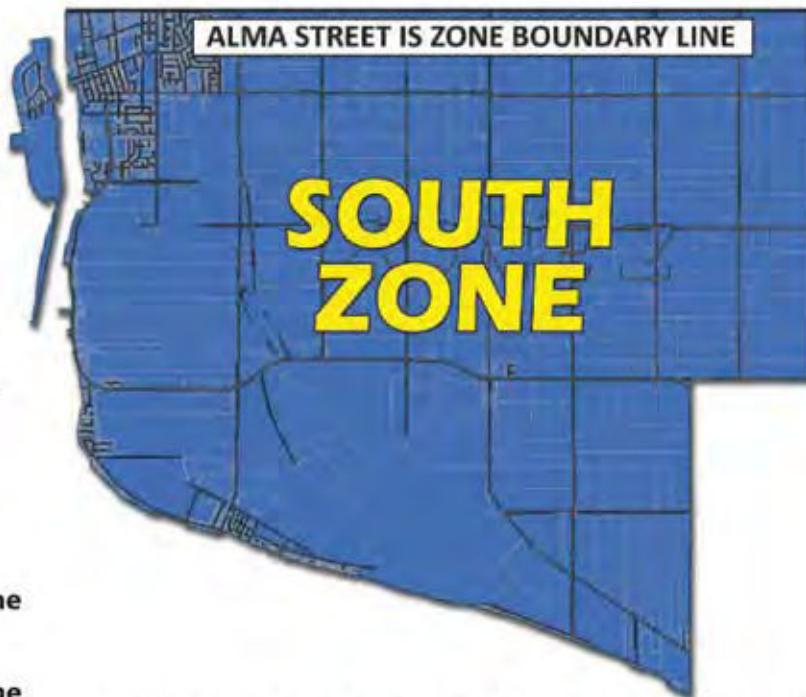
Look for the yard waste bag icon on your calendar for your exact yard waste days. Remember yard waste collection is **EVERY OTHER** week. If you have any questions, please call 519-736-3664.



North Zone



South Zone



EACH ZONE IS COLLECTED ON ALTERNATING MONDAYS.

February 2026

For recycling inquiries, contact GFL at 1-844-415-4351 or WRecycling@gflenv.com
For all other municipal questions (garbage, yard waste, white goods, etc.) Call 519-736-3664

SUNDAY	MONDAY	TUESDAY	WEDNESDAY	THURSDAY	FRIDAY	SATURDAY
1	2 	3 	4 	5	6  	7
8	9 	10 	11 	12	13 	14 Valentine's Day 
15 	16 Family Day Municipal Offices CLOSED Monday Garbage Collection will be picked up Saturday, Feb 14th	17 	18 	19	20  	21
22	23 	24 	25 	26 	27 Tax Due Date 	28

SUBSCRIBE



Be in the know! Subscribe to Council and Committee Meetings and receive up-to-date Agendas and Minutes right to your email. Subscribe today at amherstburg.ca!



March 2026

For recycling inquiries, contact GFL at 1-844-415-4351 or WRecycling@gflenv.com
For all other municipal questions (garbage, yard waste, white goods, etc.) Call 519-736-3664

SUNDAY	MONDAY	TUESDAY	WEDNESDAY	THURSDAY	FRIDAY	SATURDAY
1	2	3	4	5	6	7
					 	
8 Daylight Saving Time begins (turn clocks forward one hour)	9	10	11	12	13	14
						
15	16	17 St. Patrick's Day	18	19	20 First Day of Spring	21
					 	
22	23	24	25	26	27	28
						
29	30	31	<div><div>For all event information, check out visitamherstburg.ca</div></div> <div></div> <div>For all recreation information, check out amherstburg.ca/recreation</div>			
						

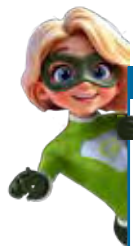
GROW GREEN WITH THE GREEN BIN!

Food Waste Is Too Good To Waste

Weekly residential curbside collection of food waste and organics begins in November. This new program will keep food waste out of the garbage stream, helping to grow a greener Region. The yard waste collection program will still be used for leaves and yard waste.

Green Bin It!

Putting food waste and organics in the Green Bin instead of the garbage helps the environment, extends the life of the Essex-Windsor Regional Landfill, and promotes a circular economy. This valuable resource in turn creates energy and fertilizes crops. It's the next step towards creating a greener Region.



WHAT GOES IN THE BIN?

Scan the QR code for the acceptable materials list.



www.ewswa.org



Bins Are Arriving Soon

Delivery of EWSWA Green Bins to single-family households in Amherstburg, Kingsville and Leamington begins in September. Let's all do our part to grow greener in 2026 - and beyond!



Download the Recycle Coach app for your Green Bin delivery date and collection schedule.



JOIN THE GREEN TEAM

Become a Green Superhero! Help make the Region greener by putting your food waste and organics in the Green Bin, not your garbage. It's a lot easier than you might think - it's just a different bin, and ultimately it's the right thing to do.

Scan the QR code to see what can go in Green Bin - and what can't - and to learn more about the Green Bin program.



* Multi-residential and condo dwellings (7 units or more) are not included in this Phase.

GREEN BIN COLLECTION OF FOOD WASTE STARTS IN FALL 2026 IN AMHERSTBURG, KINGSVILLE, AND LEAMINGTON

April 2026

For recycling inquiries, contact GFL at 1-844-415-4351 or WRecycling@gflenv.com
For all other municipal questions (garbage, yard waste, white goods, etc.) Call 519-736-3664

SUNDAY	MONDAY	TUESDAY	WEDNESDAY	THURSDAY	FRIDAY	SATURDAY
 Visit facebook.com/visitamherstburg for all 2026 festival information			1	2	3 Good Friday Municipal Offices CLOSED Friday Garbage and Recycle Collection will be picked up Saturday, April 4th	4  
5 Easter Sunday	6 Easter Monday Municipal Offices CLOSED  North Zone 	7 	8 	9 	10 	11
12	13  South Zone 	14 	15 	16 	17  	18
19	20  North Zone 	21 	22 Earth Day 	23 	24 	25
26	27  South Zone 	28 	29 	30 Tax Due Date	Check out the Town Hall on Social Media  @Aburg_TownHall  @AmherstburgTownHall	



LITHIUM-ION BATTERY SAFETY

Lithium-ion batteries can be hazardous causing tragic fires/explosions.

Drop them off safely at one of the EWSWA's Depots - for FREE!*

*** free for residents, businesses may be charged a handling fee**



Never put lithium-ion batteries in the garbage, yard waste, Green Bin, recycling, etc. **They can overheat, explode and cause fires endangering workers.**



Learn more: www.chargedforlife.ca
www.recycleyourbatteries.ca

Lithium-ion batteries can explode/cause fires!



(Typically they are thin, rectangular, wafer-shaped).

Lithium-ion batteries can be found in many electronic devices such as:

- Personal electronics (tablets, cell phones, smartwatches, laptops, etc.)
- Vaping products (e-cigarettes, etc.)
- Portable power banks
- Baby monitors
- Power tools
- Toys
- E-mobility products (e-scooters, e-bikes, mobility aids, etc.)

Dispose of them safely at an EWSWA Depot!

May 2026

For recycling inquiries, contact GFL at 1-844-415-4351 or WRecycling@gflenv.com
For all other municipal questions (garbage, yard waste, white goods, etc.) Call 519-736-3664

SUNDAY	MONDAY	TUESDAY	WEDNESDAY	THURSDAY	FRIDAY	SATURDAY
<div> <div>SUBSCRIBE</div> <div>Be in the know! Subscribe to Council and Committee Meetings and receive up-to-date Agendas and Minutes right to your email. Subscribe today at amherstburg.ca!</div> </div>					1	2
3	4 North Zone	5	6	7	8	9
10 Mother's Day	11 South Zone	12	13	14	15	16 North Zone
17	18 Victoria Day Municipal Offices CLOSED Monday Garbage Collection & Yard Waste (North) will be picked up Saturday, May 16th	19	20	21	22	23
24	25	26	27	28	29	30
31 South Zone						



No Grease Down The Drain

A message from Public Works

Grease is a by-product of cooking. It comes from meat, lard, oil, shortening, butter, margarine, food scraps, baking goods, sauces and dairy products. When grease washes down the sink, it sticks to the insides of the pipes that connect your home or business to the Town's sewer. It also coats the insides of the Town's sewer pipes. Eventually, the grease can build up until it completely blocks sewer pipes. That can create difficult and expensive maintenance problems for both the Town and private property owners.

How You Can Help?

Don't pour grease down sink drains or toilets. Scrape grease and food scraps into the trash or pour grease into a disposable container, let it harden and throw it in the garbage.

Other Items That Should Not Be Flushed

- disposable diapers
- paper towels
- feminine hygiene products
- cotton balls and swabs
- cleaning wipes (even if flushable)
- unused medications
- bandages and bandage wrappings
- razor blades and needles



No Baby Wipes

The only thing you should ever flush down a toilet is toilet paper.

Anything else can block pipes, cause mechanical problems at pump stations or treatment plants, and pollute the environment.

If additional information is required please call the Public Works Department at (519) 736-3664.



Do NOT pour left over cooking grease down the sink.

eWSWA

Did You Know?

Used motor oil can be dropped off for free at one of the EWSWA Drop Off Depots.



June 2026

For recycling inquiries, contact GFL at 1-844-415-4351 or WRecycling@gflenv.com
For all other municipal questions (garbage, yard waste, white goods, etc.) Call 519-736-3664

SUNDAY	MONDAY	TUESDAY	WEDNESDAY	THURSDAY	FRIDAY	SATURDAY
	1  North Zone 	2 	3 	4	5 	6
7	8  South Zone 	9 	10 	11	12  	13
14	15  North Zone 	16 	17 	18	19 	20
21 Father's Day First Day of Summer	22  South Zone 	23 	24 	25 	26  	27
28	29  North Zone 	30 Wednesday Garbage Collection will be picked up today.  	Open Air Weekends Downtown Streets June – September			

Basement Flooding Subsidy Program

The Town of Amherstburg is offering a financial subsidy to:

- Disconnect foundation drains that are connected to the sanitary sewer;
- Install a back water valve on the internal plumbing system in existing homes;
- Install a sump pump overflow to discharge outside to surface (applies to existing sump pumps only);

The Town is offering a downspout disconnection service to residents on the Amherstburg wastewater collection system FREE of charge.

For more information regarding the Basement Flooding Subsidy Program or the downspout disconnection service, please contact the Public Works Department at (519)-736-3664 or visit our website at www.amherstburg.ca

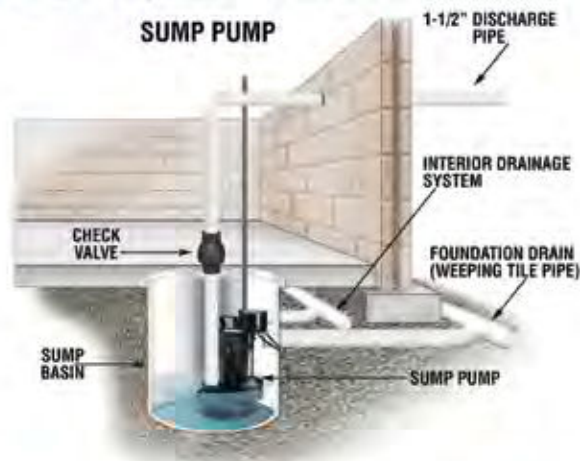
Additional Tips to Reduce the Risk of Flooding

- Ensure ground & pavement slope away from building
- Ensure there are no cracks in storm water piping around the house
- Ensure no cracks or holes in the basement walls or floors that may allow water to enter the basement
- Provide backup power supply to the sump pump

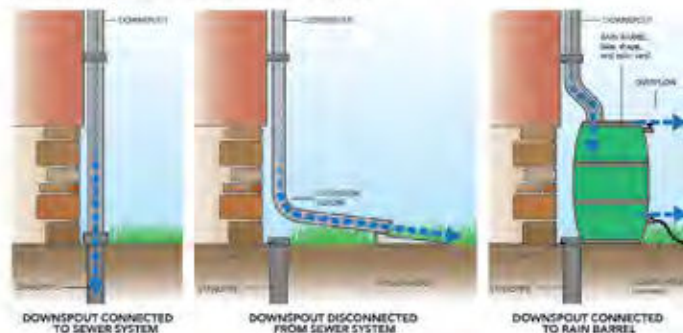


Back Water Valve

Sump Pump Installed In House



Downspout Disconnection



July 2026

For recycling inquiries, contact GFL at 1-844-415-4351 or WRecycling@gflenv.com
For all other municipal questions (garbage, yard waste, white goods, etc.) Call 519-736-3664

SUNDAY	MONDAY	TUESDAY	WEDNESDAY	THURSDAY	FRIDAY	SATURDAY
 Canada Day Celebrations - July 1st			1 Canada Day  Municipal Offices CLOSED Garbage collection will be Tuesday, June 30th	2	3	4
5	6  South Zone	7 	8 	9 	10 	11 
12	13  North Zone	14 	15 	16	17	18
19	20  South Zone	21 	22 	23 	24 	25 
26	27  North Zone	28 	29 	30	31 Tax Due Date	Visit facebook.com/visitamherstburg for event updates and information.



ewswa

PUBLIC DROP OFF DEPOTS

The EWSWA encourages residents to take advantage of the three Depots in the Essex-Windsor region.

Windsor Depot

3560 North Service Rd.
(E.C. Row & Central)

Kingsville Depot

2021 Albuna Townline
(County Rd. 31)

Essex Depot

7700 County Rd. 18
(located at the Essex-Windsor
Regional Landfill)

This Recycling Depot doesn't accept
garbage, and Garden Gold Compost is
not available for purchase.

*Garbage User Fee: There is a user fee to drop off garbage at the Windsor and Kingsville Depots.
(Charges may apply for small businesses and double axle trailers in Windsor and Kingsville)*



Learn more at: www.ewswa.org

DROP OFF

Residents / Free to Drop Off

- Bicycles
- Household Hazardous and Special Products (HSP)
(includes lighting, batteries)
- Electronics
- Recycling
- Metals
- Tires
- White Goods (without compressors)
- Yard Waste

Charges Apply

- Garbage
- Grass Clippings

Purchase

- Garden Gold Compost



Scan for more depot information.

August 2026

For recycling inquiries, contact GFL at 1-844-415-4351 or WRecycling@gflenv.com
For all other municipal questions (garbage, yard waste, white goods, etc.) Call 519-736-3664

SUNDAY	MONDAY	TUESDAY	WEDNESDAY	THURSDAY	FRIDAY	SATURDAY
 <p>Farm Fest – August 7, 8, 9 Latin Fest – August 28, 29, 30</p> <p>Visit facebook.com/visitamherstburg for event updates and information.</p>						1
2	<p>3 Civic Holiday Municipal Offices CLOSED</p> <p>Monday Garbage and Yard Waste (South) Collection will be picked up Saturday, August 1st</p> 	4	5	6	7	8
9	10	11	12	13	14	15
16	17	18	19	20	21	22
23	24	25	26	27	28	29
30	31					



THE GREEN BINS ARE COMING!

The EWSWA is rolling out the new Green Bin collection program to keep food waste and organics out of the landfill. Over 30,000 homes will receive Green Bins, so please be patient – yours will be delivered before the November program launch.

🌱 Delivery schedules can be found through the Recycle Coach app, the EWSWA website (www.ewswa.org) and social media.

🌱 Your 120L EWSWA Green Bin has a gravity lock and comes with a Starter Kit (a kitchen catcher, sample compostable bag, and Green Bin information).

🌱 Collection starts in November, so please be sure to store your Green Bin safely until then.

NOTE:
Only EWSWA
Green Bins will
be collected.

Download Recycle Coach
for your Green Bin
delivery date
and collection
schedule.

JOIN THE GREEN TEAM

Become a Green Superhero! Help make the Region greener by putting food waste and organics in the Green Bin, not the garbage. It's a lot easier than you might think – just a different bin. And it's the right thing to do.

Your new Starter Kit will get you going, and you can learn more at www.ewswa.org or by scanning below.

WHAT GOES IN THE BIN?

Scan the QR code for the acceptable materials list.

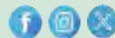


www.ewswa.org



ewswa

ESSEX-WINDSOR SOLID WASTE AUTHORITY



GREEN BIN COLLECTION OF FOOD WASTE STARTS IN FALL 2026 IN AMHERSTBURG, KINGSVILLE, AND LEAMINGTON

September 2026

For recycling inquiries, contact GFL at 1-844-415-4351 or WRecycling@gflenv.com
 For Green Bin inquiries, contact the EWSWA at 1-800-563-3377 / Customer Support Portal: www.ewswa.org
 For all other municipal questions (garbage, yard waste, white goods, etc.) Call 519-736-3664

SUNDAY	MONDAY	TUESDAY	WEDNESDAY	THURSDAY	FRIDAY	SATURDAY
Uncommon Festival – September 18, 19, 20 Day of Truth and Reconciliation – September 30		1	2	3	4	5
						
						
6	7 Labour Day Municipal Offices CLOSED Monday Garbage and Yard Waste (North) Collection will be picked up Saturday, September 5th	8	9	10	11	12
						
13	14	15	16	17	18	19
						
						
20	21	22 First Day of Fall	23	24	25	26
						
						
27	28	29	30 National Day for Truth and Reconciliation Municipal Offices CLOSED	 Visit facebook.com/visitamherstburg for event updates and information.		
						

ewswa

WHAT GOES WHERE ...

It's free* to drop off
used motor oil, spent
fluorescent bulbs,
leftover paint or
any other unused or
expired hazardous
special products at
one of EWSWA's
three Depots.

* free for residents,
businesses will be charged



USED MOTOR OIL



LEFTOVER PAINT



FLUORESCENT BULBS



Used Cooking Oil

Free residential drop off at an
EWSWA Depot!



Empty / Expired Mini Propane Tanks & Batteries

Free residential drop off at an
EWSWA Depot!



Learn more: www.ewswa.org

October 2026

For recycling inquiries, contact GFL at 1-844-415-4351 or WERecycling@gflenv.com
 For Green Bin inquiries, contact the EWSWA at 1-800-563-3377 / Customer Support Portal: www.ewswa.org
 For all other municipal questions (garbage, yard waste, white goods, etc.) Call 519-736-3664

SUNDAY	MONDAY	TUESDAY	WEDNESDAY	THURSDAY	FRIDAY	SATURDAY
Check out the Town Hall on Social Media			 @Aburg_TownHall  @AmherstburgTownHall	1	2	3
4	5  North Zone 	6 	7 	8	9  	10  South Zone 
11 	12 Thanksgiving Day Municipal Offices CLOSED Monday Garbage and Yard Waste (South) Collection will be picked up Saturday, October 10th	13 	14 	15	16  	17
18	19  North Zone 	20 	21 	22 	23 	24
25	26  South Zone 	27 	28 	29	30 Tax Due Date  	31 Halloween

JOIN THE GREEN TEAM

Almost 50% of the garbage set out by Essex-Windsor residents is food waste and organics.* You can easily reduce your waste footprint by putting food waste and organics into the EWSWA Green Bin instead. Become a Green Superhero by using the Green Bin, and help create a better tomorrow!

* 2022/23 curbside audit of Essex-Windsor households

WHAT GOES IN THE BIN?

Scan the QR code for the acceptable materials list.



www.ewswa.org

ewswa
ESSEX-WINDSOR SOLID WASTE AUTHORITY

www.ewswa.org




Download the Recycle Coach app for your Green Bin delivery date and your Green Bin collection schedule.


For full program information, visit ewswa.org

GREEN BIN COLLECTION STARTS WEEK OF NOVEMBER 2


Get your green on! Download Recycle Coach now and know your collection start date.


5 Key Things To Know

 **Your collection day.** Check your municipal collection calendar for your weekly collection dates, and download Recycle Coach for updates and notifications.

 **Your set-out time.** Put your Green Bin out by **6 AM** so you don't miss the truck.

 **How to use your Green Bin.** Know the do's and don'ts of using your Bin. Refer to your Starter Kit for details.

 **What bags to use.** Only compostable bags can be used in this program. Refer to your Starter Kit for details.

 **Proper Bin set-out.** "Park-Point-Space". Due to automated collection, you must:

* **Park** the Bin about 30 cm (1 ft) behind the curb.

* **Point** the arrows on the Bin to the street.

* **Space** the Bin at least 1 metre apart from other carts or structures.

NOTE:
Only EWSWA Green Bins will be collected.



GREEN BIN COLLECTION OF FOOD WASTE STARTS IN FALL 2026 IN AMHERSTBURG, KINGSVILLE, AND LEAMINGTON

November 2026

For recycling inquiries, contact GFL at 1-844-415-4351 or WRecycling@gflenv.com
 For Green Bin inquiries, contact the EWSWA at 1-800-563-3377 / Customer Support Portal: www.ewswa.org
 For all other municipal questions (garbage, yard waste, white goods, etc.) Call 519-736-3664

SUNDAY	MONDAY	TUESDAY	WEDNESDAY	THURSDAY	FRIDAY	SATURDAY
1 Daylight Saving Time ends (turn clocks back one hour)	2  North Zone	3 	4 	5	6  GB	7 
8	9  South Zone	10 	11 Remembrance Day Municipal Offices CLOSED 	12	13  GB	14  
15	16  North Zone	17 	18 	19	20  GB	21 
22	23  South Zone	24 	25 	26 	27  GB	28  
29	30 Final Collection  North Zone	 <p>River Lights Winter Festival. For info about Opening Night & winter activities, go to visitamherstburg.ca/riverlights</p>				

DON'T FREEZE THIS WINTER

Keep It Green with the Green Bin Program

Winter's cold weather can present unique challenges. Here are some useful cold weather tips to help you "stay green" all year.

1. Line the bottom of your Green Bin with a layer of cardboard, newspaper, or a paper egg carton to prevent contents from freezing to the Bin.
2. Drain liquids before you put food waste and other organics into your Bin.
3. Where possible, try to set out your Bin the morning of collection (by 6 AM) to avoid material freezing to the Bin.

Winter tips at
www.ewswa.org



Download the Recycle Coach app for
Green Bin program updates.

STAY GREEN THIS WINTER WITH THE GREEN TEAM

Be a Green Superhero all year-round! Help make the Region greener by using the Green Bin instead of your garbage for food waste and organics. It's a lot easier than you might think - even in the winter. It's just a different bin!

WHAT GOES IN THE BIN?

Scan the QR code for the
acceptable materials list.



www.ewswa.org

ewswa
ESSEX-WINDSOR SOLID WASTE AUTHORITY



GREEN BIN COLLECTION OF FOOD WASTE STARTS IN FALL 2026 IN AMHERSTBURG, KINGVILLE, AND LEAMINGTON

December 2026

For recycling inquiries, contact GFL at 1-844-415-4351 or WRecycling@gflenv.com
 For Green Bin inquiries, contact the EWSWA at 1-800-563-3377 / Customer Support Portal: www.ewswa.org
 For all other municipal questions (garbage, yard waste, white goods, etc.) Call 519-736-3664

SUNDAY	MONDAY	TUESDAY	WEDNESDAY	THURSDAY	FRIDAY	SATURDAY
This calendar does not expire. Turn the page for January 2027		1	2	3	4	5
					 GB	
6	7 Final Collection  South Zone	8	9	10	11	12
					 GB	
13	14	15	16	17	18	19
					 GB	
20	21 First day of Winter	22	23	24	25 Christmas Day	26 Boxing Day
			 	Municipal Offices CLOSED • December 24 to January 1, 2027		
					Friday Collections will be picked up Saturday, December 26th →  GB	
27	28	29	30	31 New Year's Eve	Happy Holidays! Best wishes for a safe and Happy Holiday Season from Council and Staff of the Town of Amherstburg!	
Municipal Offices CLOSED • December 24 to January 1, 2027						
						

Christmas Trees / Snow Priorities

Real Christmas trees are a renewable resource. At most Christmas tree farms, up to three seedlings are planted in spring for every tree harvested. Please place your tree at the roadside the night prior to the Christmas Tree collection day:

Christmas Tree Recycling Requirements:

Trees are run through the chipping machine and turned into compost, so all decorations, tree skirts, and plastic tree bags, etc. must be removed. Thanks for your help!

Please place your tree out for collection the night before one of the dates listed below:

- Monday, January 4th, 2027.
- Monday, January 11th, 2027.



Snow Removal:

During heavy snowfalls, when snowplowing of roads is required, residents are requested to park vehicles off of the road and to remove any unlawfully placed items such as basketball and hockey nets.



Please be considerate of the collection workers and place your garbage, yard waste and recyclables in a level, accessible area.

Thanks for your cooperation! Have a very Happy New Year!

ewswa

Stay connected with the EWSWA on social media for the latest information on new programs, collection schedules, etc.



@ewswarecycles



EWSWAorg



@ewswa



ask@ewswa.org





www.ewswa.org



January 2027

For recycling inquiries, contact GFL at 1-844-415-4351 or WRecycling@gflenv.com
 For Green Bin inquiries, contact the EWSWA at 1-800-563-3377 / Customer Support Portal: www.ewswa.org
 For all other municipal questions (garbage, yard waste, white goods, etc.) Call 519-736-3664

SUNDAY	MONDAY	TUESDAY	WEDNESDAY	THURSDAY	FRIDAY	SATURDAY
2027 Calendar will be delivered before the end of January.					1 New Year's Day Municipal Offices CLOSED Friday Green Bin and Garbage Collection will be picked up Saturday, January 2nd	2  
3	4 Remove ALL decorations and plastic bags  	5 	6 	7 	8   	9 
10	11 Remove ALL decorations and plastic bags  	12 	13 	14 	15  	16 
17	18 	19 	20 	21 	22   	23 
24	25 	26 	27 	28 	29   	30 
31						



TOWN OF AMHERSTBURG DIRECTORY 2026

THE CORPORATION OF THE TOWN OF AMHERSTBURG

271 Sandwich St. South, Amherstburg, ON N9V 2A5
Telephone: 519-736-0012 • Fax: 519-736-5403
E-Mail: inquiry@amherstburg.ca
Website: www.amherstburg.ca



ESSEX-WINDSOR SOLID WASTE AUTHORITY

360 Fairview Ave. West / Suite 211
Essex, ON N8M 3G4
Telephone: 1-800-563-3377
Website: ewswa.org
Email: ask@ewswa.org
TTY: 1-877-624-4832



MIX
Paper From
Responsible Sources
FSC® C102252

This calendar is
available in alternate
formats upon request.

Emergency (Police, Fire, Ambulance): 911

Police Department: 519-736-8559

Fire Department: 519-736-6500

Corporation of the County of Essex: 519-776-6441

Essex County Highways: 519-326-8691

Essex Power Corporation: 519-737-6640

After hours, weekends & holidays:

Emergency 519-561-6366

Hydro One Service: 1-888-664-9376

Hydro One Outages: 1-800-434-1235

Ministry of the Environment: 1-800-565-4923

Spill Action Centre: 1-800-268-6060

Ministry of Transportation: 1-800-268-4686

Enbridge: 1-877-362-7434

Windsor-Essex County Health Unit: 519-258-2146

Windsor-Essex County School Boards:

Public: 519-255-3200

Separate: 519-253-2481

Green Bin Program (EWSWA) 1-800-563-3377

Circular Materials 1-877-667-2626

Town Hall

271 Sandwich Street South: 519-736-0012

CAO/Clerk's Office: 519-736-0012

Financial Services: 519-736-0012

Dog Control Officer 24 Hrs: 519-966-5751

Public Works Department

512 Sandwich Street South: 519-736-3664

Garbage Collection:

GFL/WDS 519-944-8009

Roads/Drainage: 519-736-3664

Water/Wastewater: 519-736-3664

After Hours Emergency: 519-561-6365

Recycling Collection

GFL 1-844-415-4351

Libro Credit Union Centre (Arena)

3295 Meloche Road: 519-736-5712

Building & Planning: 519-736-5408

Parks/Recreation/Naturalized Areas: 519-736-5712

Tourism/Special Events: 519-730-1309

Visitor Information Centre: 519-736-8320