



# 2023-2024 WASTE & RECYCLING GUIDE

[haldimandcounty.ca](http://haldimandcounty.ca)

*Photo Submitted by Ann Culp*



Available in  
9 different  
languages!

Download the **FREE** waste and recycling app:

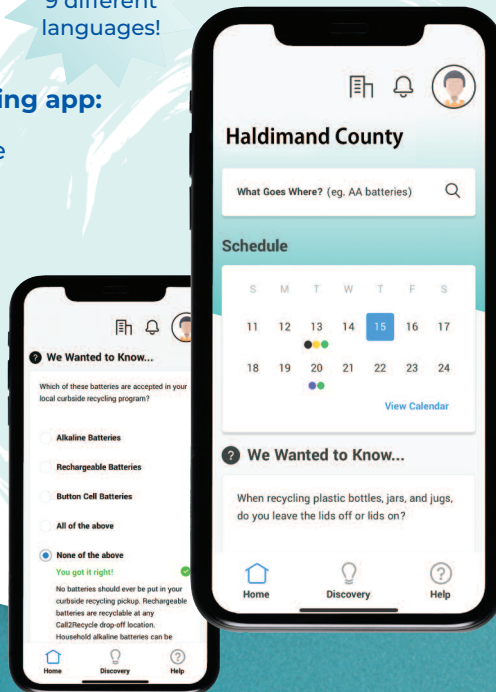
- Personalized collection schedule
- Waste collection reminders
- Customized notifications
- “What Goes Where” search tool
- Report-a-problem feature



SCAN ME



Download the app today!



**Haldimand  
County**

## We want to hear from you!

If you have questions about the information contained within this Guide, please call us at **905-318-5932** or email [waste@haldimandcounty.on.ca](mailto:waste@haldimandcounty.on.ca)

For questions regarding curbside waste, recycling or bulky item collection, please call **MODERN at 1-844-624-3126.**

For more information, visit our website at [www.haldimandcounty.ca](http://www.haldimandcounty.ca)



Turnkey solutions for effective waste management education & outreach.





# REPORT ILLEGAL DUMPING

ANONYMOUSLY AT

# CRIME STOPPERS

HALDIMAND & NORFOLK

#SayItHere

# 1-800-222-8477

[www.helpsolvecrime.com](http://www.helpsolvecrime.com)



**Haldimand  
County**



## SHREDDING EVENT DAYS

**Caledonia** June 10, 2023

Haldimand County Caledonia Centre

**Dunnville** September 16, 2023

Erie Mutual Insurance, Dunnville location



For other inquiries check the  
**FREE Recycle Coach™ App!**

## Stay up-to-date with County news!

There are many ways to stay connected & get in touch with Haldimand County!

..... Follow along on social media, sign up for eNewsletters or reach out to us directly.



[www.facebook.com/HaldimandCounty/](http://www.facebook.com/HaldimandCounty/)



@HaldimandCounty



Get County news delivered straight to your inbox!

Sign up for eNewsletters at

[www.haldimandcounty.ca/connect/](http://www.haldimandcounty.ca/connect/)



For inquiries or customer service, please call

905-318-5932

## CANBOROUGH WASTE MANAGEMENT FACILITY

Want to recycle something that isn't picked up curbside?

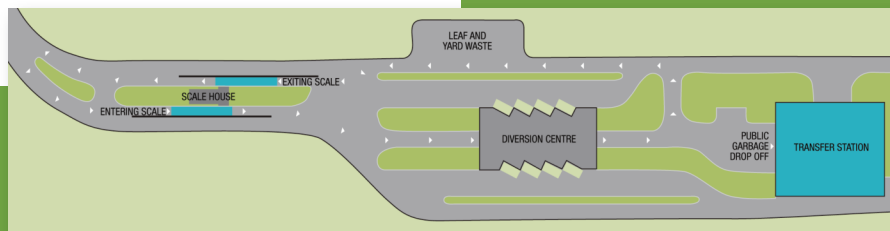
The Diversion Centre at the Canborough Waste Management Facility has been designed so that you can recycle more than what you are allowed at the curb each week.

**Here's a tip** - try sorting your waste while loading your vehicle. This will make it easier to unload into the separate bins at the Diversion Centre.

**Address:**

499 James Road, Dunnville

Phone Number: 905-774-9010



**Hours of Operation:**

Monday - Friday: 8:00 a.m. - 4:15 p.m.

Saturday: 9:00 a.m. - 1:00 p.m.

Sunday: Closed

# HOUSEHOLD HAZARDOUS AND SPECIAL PRODUCTS EVENTS

Event Hours: 9:00 am - 1:00 pm

- Cayuga Secondary School • April 29, 2023
- Caledonia, McKinnon Park Secondary School • June 10, 2023
- Dunnville Roads Yard • September 16, 2023
- Hagersville Secondary School • October 14, 2023

## Accepted Materials:



## Unacceptable Materials:

Agricultural, commercial or industrial waste • ammunition and explosives, including fireworks (contact police) • pathogenic waste • PCBs • radioactive waste • appliances containing refrigerants • general garbage or recycling.

## ACCEPTING ELECTRICAL AND ELECTRONIC EQUIPMENT

Recycle the electronics listed in "Other Waste Solutions" on page 6 or at any of the four hazardous and special products event days listed to the left.

## WINTER WEATHER DELAYS

Waste collection may be affected when the weather packs a punch! Snow and ice make otherwise 'flat' roads and lanes difficult to navigate safely, while hills can be nearly impossible to service without the risk of property damage. Wind can also be treacherous, creating roadblocks or hazards involving overhead lines.

For garbage or recycling service alerts, please visit [www.haldimandcounty.ca](http://www.haldimandcounty.ca), call 905-318-5932 or check for alerts from your local radio station, social media (Twitter, Facebook).

If your material was missed due to weather, bring the material back inside and set it out the following week.

## CHRISTMAS TREE RECYCLING PROGRAM

Help keep Christmas trees out of the landfill site. Please bring your trees to the following temporary depots where we will chip your tree and recycle it into mulch!

**OPEN: 24 Hours**  
December 26, 2023 - January 12, 2024

- Caledonia • Dead end of Caledonia Ave.
- Caledonia • Kinsmen Park, Caithness St. W.
- Cayuga • Kinsmen Park, Ottawa St. & Talbot St.
- Dunnville • Lions Park, 640 Lock St. W.
- Hagersville • Lions Park, Alma St. S.
- Townsend • Dead end of Forest Park Drive

..... OR .....

Canborough Waste Management Facility  
499 James Road, Dunnville

**OPEN:**  
Monday - Friday - 8 a.m. - 4:15 p.m.  
Saturday - 9 a.m. - 1 p.m.  
Sunday - CLOSED

## YARD WASTE COLLECTION

Yard waste is collected at curbside on your regular collection day.  
**Note:** Yard waste is only collected curbside within the urban centres as referenced on our website. Check our website for urban locations. [www.haldimandcounty.ca/garbage-recycling/garbage-recycling-collection-programs](http://www.haldimandcounty.ca/garbage-recycling/garbage-recycling-collection-programs) and choose Leaf & Yard tab for urban location maps.

**Spring Collection: April 24 - May 27, 2023**  
**Fall Collection: October 23 - December 1, 2023**

### Acceptable Containers:

Only paper yard waste bags (rolled shut) or open-top, reusable, rigid containers with the label "yard waste" may be used.

**NO plastic bags!**



Place weeds, plant trimmings and leaves in **acceptable containers only**. Bundle branches as shown above. There is no limit for yard waste.

### Items NOT Accepted as Yard Waste:

Kitchen scraps, grass clippings, rocks, dirt, sod, tree stumps, larger branches, flower pots/trays, wood and pet waste. You may dispose of these materials at the Canborough Waste Management Facility.

Yard waste is accepted at the Canborough Waste Management Facility **free of charge year round**.

The material will either be chipped on site or sent for composting. Please contact the Canborough Waste Management Facility if you would like to pick up these wood chips for a minimal charge per load.



# RECYCLING GUIDE

Haldimand County has a two stream recycling program; please keep materials separate. All materials should be placed at your curb by 7 a.m. sharp on your collection day.

Set out no earlier than 7 p.m. the day before collection and receptacles are to be taken off the curb no later than 7 p.m. the day of collection. **Do not place** containers or bags on top of or behind snowbanks.

# KEEP INFORMED

Changes coming... Blue Box Program Transition. Visit: Resource Productivity Authority (rpra.ca) for details.

## BLUE BOX

Containers & rigid plastic packaging (every week).



Place recyclables loosely inside Blue Box.

**Additional items:** Place in another rigid, reusable container with handles.

**Maximum weight:** 18 kg (40 lbs).

### ACCEPTED ITEMS & PREPARATION

#### Glass Bottles & Jars

Only clear or coloured food & beverage glass bottles & jars.

Place **broken glass** into cardboard box, tape it shut, label "Broken Glass" and set out at curb for garbage.

Remove lids and rinse containers.

Place both the lid and container in your blue box.



- NO** light bulbs of any type
- NO** mirror or window glass
- NO** drinking glasses
- NO** ceramics (plates, mugs)

#### Plastics & Styrofoam

**Food & beverage** - bottles, tubs, laundry jugs & bottles with the #1-7 recycling symbol.

**Cleaner, soap & shampoo** - bottles with the #1-7 recycling symbol.

**Empty** and rinse all containers. Discard lids on.

**Rinse all Styrofoam** cups and take-out containers. **Plastic** flower pots and trays are accepted.

- NO** motor oil or chemical containers
- NO** plastic bags or bubble wrap
- NO** toys
- NO** water cooler bottles
- NO** coffee cups

## BLACK BOX

Paper, cardboard and bundled plastic bags/stretchy plastic outer-wrap (every week).



**Additional items:** Place in another rigid, reusable container with handles.

**Maximum weight:** 18 kg (40 lbs).

### ACCEPTED ITEMS & PREPARATION

#### Cardboard



**Cardboard must be flattened.**

Tie bundles of cardboard no larger than 91 cm x 91 cm x 20 cm (3 ft x 3ft x 8in).

Remove inside bags, packing materials or liners.

- NO** waxed cardboard
- NO** contaminated cardboard with oil or food
- NO** milk cartons or juice boxes

#### Mixed Paper

**Items that are 100% paper** - magazines, catalogues, telephone books, junk mail, paper bags, office papers, clear bagged shredded paper, envelopes, only plain Kraft paper wrapping paper or greeting cards, etc.

**Books** - remove hard covers.

**Newspaper and all flyers** - stack them in a box or tie in bundles. Remove plastic covers.

- NO** other than plain wrapping paper
- NO** photographs, construction, tissue paper
- NO** used tissues, paper towels, other paper products
- NO** coated paper bags (pet food bags)
- NO** paper beverage cups (coffee, etc.)

## GARBAGE

Maximum of 3 receptacles per household, 10 receptacles per business or group home (every week).



Non-recyclable materials including food waste.

**Acceptable containers:** Bags or cans.

**Maximum size:** 92 cm (36") high and 61 cm (24") in diameter.

**Maximum weight:** 18 kg (40 lbs).



Bristol board, greeting cards, wrapping paper



Ceramics (dishes, plates, tea pots)



Chip/cookie bags, chocolate/candy bar wrappers, juice/soup pouches

#### Other Items Considered Garbage:

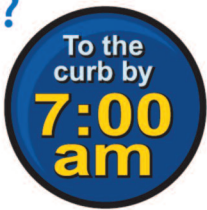
- Rapid test kits, mask/gloves (double bagged)
- CD/DVD cases
- Cigarette ashes & butts
- Furnace filters
- Construction/tissue papers
- Diapers & feminine hygiene products
- Disposable mop/dryer sheets
- Kitty litter
- Coat hangers
- Popsicle sticks, toothpicks
- Strapping (plastic/nylon)
- Wood shavings



D!

# UNSURE whether an item not listed here is recyclable?

Call us or try our "What Goes Where" search tool available on our website.



ion Plan  
y & Recovery  
ils.

Need a black or blue box for free? Call MODERN at 1-844-624-3126  
Composters - See website for prices and points of sale



bol.  
card sprayers and  
out containers.  
cepted.

## Beverage Cartons & Juice Boxes

**Gable Top Cartons** - milk, cream, juice, egg substitutes & sugar.

**Tetra Pack Boxes** - juice boxes, soup boxes & broth boxes.

**Spiral Cardboard Tubes** - frozen juice containers, chip cans & chilled dough.

**Remove** all contents including straws & plastic wrapping, wash out containers & boxes.



- NO** straws
- NO** plastic wrapping (recycle in black box)
- NO** foil or foil-lined bags (pet food)
- NO** stand-up pouches (juice, soup)

## Aluminum, Steel, Aerosol & Empty Paint Cans

**All food and beverage cans & lids.**

**ONLY** clean aluminum foil containers & trays.

**Empty** and rinse all metal containers.

**Empty & dry** all paint cans before recycling.

**ONLY** empty aerosol cans.



- NO** foil wrap or foil lined cardboard lids
- NO** aluminum foil with food or liquid residue
- NO** hangers, metal pots or baking sheets
- NO** partially full aerosol cans
- NO** propane cylinders



e  
ber,  
etc.  
em in your black  
tic wrap first.

## Boxboard

**Boxboard** - cereal boxes, shoe boxes, egg cartons, paper towel center cores, etc.

**Remove** inside bags or liners.



- NO** frozen food packaging - paper ice cream cartons, frozen dinner boxes, etc.
- NO** inside bags or liners
- NO** paper towels or tissues

## Plastic Bags & Stretchy Plastic Outer-wrap

**Bag Your Bags** - Stuff all plastic bags & stretchy outer-wrap into one bag, tie handles & place in black recycling box.

**Acceptable Plastic Bags** - wrap from toilet paper/paper towel, produce bags, empty milk bags/pouches, bread bags, wrap from water/pop cases, etc.

**Remove** all food residue & receipts.



- NO** plastic wrap other than those listed
- NO** cookie, cereal or cracker box liners
- NO laminated bags** - chip bags or other foil bags
- NO** food residue, receipts
- NO** resealable sandwich/freezer bags



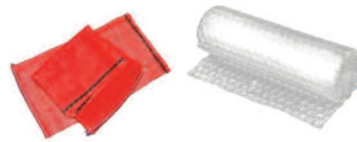
andy  
ches



Lawn edging,  
garden hoses



Paper coffee  
& drink cups



Pet food bags, woven  
onion/seed bags, bubble wrap



Food waste

### Food Items Are Considered Garbage:

- All food waste - meat, vegetables, fruits, breads
- Coffee grounds & filters, coffee pods, tea bags
- Paper napkins, plates, tissues, towels, bags
- Microwavable popcorn bags
- Fats, oils & grease (solid or absorbed with a paper towel)

y backyard composting.

### Materials NOT COLLECTED Curbside:

- Automotive parts (including tires)
- Construction, demolition and renovation materials (siding, doors, fencing, drywall, wood, shingles, etc.)
- Dead animals
- Electronics
- Grass clippings, sod, soil, rocks
- Household hazardous waste
- Propane or helium cylinders



# OTHER WASTE SOLUTIONS

PRODUCT	DESCRIPTION	WHERE DOES IT GO?
<b>Bulky Waste</b> 	<p>Residents may call MODERN at 1-844-624-3126 to schedule a <b>maximum of two bulky waste collections per year</b>, consisting of up to six items per collection.</p> <p>Bulky waste includes furniture, mattresses, box springs and carpeting/linoleum. Please tie these materials into rolls measuring no longer than 1.2 m (4 ft), 30.5 cm (12 inch) in diameter. <b>Each piece or bundle counts toward the 6 item limit.</b></p>	<p><b>Curbside</b> – No charge  <b>Note:</b> Bulky Collection day is not the same as your curbside collection day.</p> <p>Schedule and confirm your bulky collection date with MODERN staff.</p> <p><b>Canborough Waste Management Facility</b></p> <ul style="list-style-type: none"> <li>• Tipping fee applies</li> </ul>
<b>Electronic Waste</b> 	<p><b>Accepted:</b> Computers, printers (desktop and floor-standing), printer cartridges, video gaming devices, telephones (including cell), display devices, radios, stereos, headphones, speakers, cameras (including security), video recorders, drones with audio or visual recording equipment, peripherals and cables (used to support the function of information technology, telecommunications and audio visual equipment, including charging equipment), parts of information technology (such as hard drives), handheld point-of-sale terminals or devices, musical instruments and audio recording equipment.</p> <p><b>Not Accepted:</b> ITT/ACC equipment weighing more than 250 kg, small and large appliances, power tools, weed eaters, Christmas lights, razors, hair dryers, motor vehicles, children's toys, textiles, clothing, furniture or any other upholstered or stuffed articles containing EEE.</p>	<p><b>Recycle electronics for no charge at:</b></p> <ul style="list-style-type: none"> <li>• Hazardous and Special Products event days</li> <li>• Canborough Waste Management Facility</li> <li>• Walpole Roads Yard 1433 Nanticoke Road (County Rd 55), Jarvis</li> </ul>
<b>Construction &amp; Demolition Waste</b> 	<p><b>Construction &amp; Demolition waste is NOT collected at the curb!</b></p> <p><b>Accepted:</b> Tile, flooring (not including laminates), drywall, wiring, untreated wood, painted or stained lumber, cabinetry, windows, doors, plaster, bricks, asphalt, toilets, sinks, piping.</p> <p><b>Not Accepted:</b> Pressure treated wood, carpet, laminates, stucco and vinyl siding. Dispose of these materials in the garbage.</p>	<p><b>Canborough Waste Management Facility</b></p> <ul style="list-style-type: none"> <li>• Tipping fee applies</li> </ul> <p><b>Note:</b> <b>Shingles are accepted</b> but need to be disposed of in the designated bin.</p> <p><b>Donate</b> to Habitat for Humanity or similar organization.</p>
<b>Metal</b> 	<p><b>Metal is NOT collected at the curb!</b></p> <p><b>Accepted:</b> Appliances, barbecues, bed frames, hot water heaters, metal bath tubs, furnaces, storage sheds, bicycles. Appliances containing refrigerant must be tagged indicating the refrigerant has been removed by a licensed technician.</p>	<p><b>Canborough Waste Management Facility</b></p> <ul style="list-style-type: none"> <li>• No charge</li> <li>• If the item has not already been tagged indicating the refrigerant has been removed (if applicable), see website for associated charges.</li> </ul>
<b>Tires</b> 	<p><b>Accepted:</b> Residential tires, tires with rims.  <b>NOTE:</b> Tires must be free of mud.</p>	<p><b>Canborough Waste Management Facility</b></p> <ul style="list-style-type: none"> <li>• No charge</li> </ul>
<b>Refrigerant Containing Items</b> 	<p><b>Accepted:</b> Any item containing refrigerants (e.g. air conditioners, refrigerators, freezers).</p>	<p><b>Canborough Waste Management Facility</b></p> <ul style="list-style-type: none"> <li>• See website for associated charges</li> </ul>
<b>Batteries</b> 	<p><b>Accepted:</b> Standard A, AA, AAA, C, D (both alkaline and 'heavy duty'; 6/9 volt; button cells, rechargeable battery packs (NiCad, NiMH, lithium ion).</p>	<p><b>Recycle batteries for no charge at:</b></p> <ul style="list-style-type: none"> <li>• Canborough Waste Management Facility</li> <li>• See website for additional locations</li> </ul>

## Re-Use Program at the Canborough Waste Management Facility

Someone's trash just may be your treasure! This bin contains items that may be useful to someone else. Check with the site attendant to determine if you may place an item inside this bin, or if you'd like to take an item from the bin.



# Recycling is Changing



[www.HaldimandCounty.ca](http://www.HaldimandCounty.ca)

## Keep these products out of landfills:



Paint



Refillable propane cylinders



Non-refillable pressurized cylinders



Lights



Pesticides

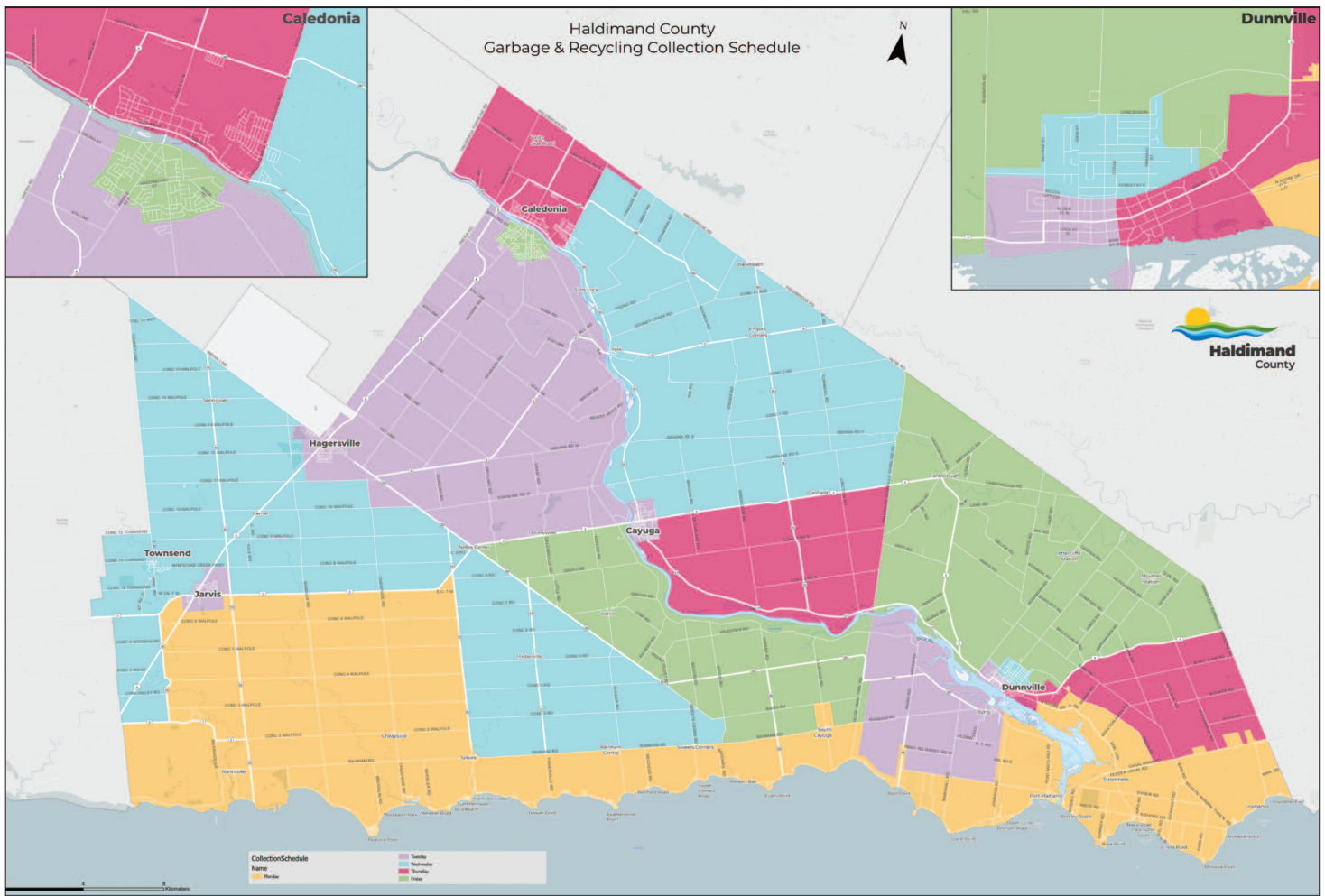


Solvents



Find a recycling location near you at [productcare.org/ontario](http://productcare.org/ontario)





**COLLECTION SCHEDULE • Use the Recycle Coach app to find details.**

APRIL 2023						
S	M	T	W	T	F	S
						1
2	3	4	5	6	7	8
9	10	11	12	13	14	15
16	17	18	19	20	21	22
23	24	25	26	27	28	29
30						

MAY 2023						
S	M	T	W	T	F	S
	1	2	3	4	5	6
7	8	9	10	11	12	13
14	15	16	17	18	19	20
21	22	23	24	25	26	27
28	29	30	31			

JUNE 2023						
S	M	T	W	T	F	S
				1	2	3
4	5	6	7	8	9	10
11	12	13	14	15	16	17
18	19	20	21	22	23	24
25	26	27	28	29	30	

JULY 2023						
S	M	T	W	T	F	S
						1
2	3	4	5	6	7	8
9	10	11	12	13	14	15
16	17	18	19	20	21	22
23	24	25	26	27	28	29
30	31					

AUGUST 2023						
S	M	T	W	T	F	S
		1	2	3	4	5
6	7	8	9	10	11	12
13	14	15	16	17	18	19
20	21	22	23	24	25	26
27	28	29	30	31		

SEPTEMBER 2023						
S	M	T	W	T	F	S
					1	2
3	4	5	6	7	8	9
10	11	12	13	14	15	16
17	18	19	20	21	22	23
24	25	26	27	28	29	30

OCTOBER 2023						
S	M	T	W	T	F	S
1	2	3	4	5	6	7
8	9	10	11	12	13	14
15	16	17	18	19	20	21
22	23	24	25	26	27	28
29	30	31				

NOVEMBER 2023						
S	M	T	W	T	F	S
			1	2	3	4
5	6	7	8	9	10	11
12	13	14	15	16	17	18
19	20	21	22	23	24	25
26	27	28	29	30		

DECEMBER 2023						
S	M	T	W	T	F	S
					1	2
3	4	5	6	7	8	9
10	11	12	13	14	15	16
17	18	19	20	21	22	23
24	25	26	27	28	29	30
31						

JANUARY 2024						
S	M	T	W	T	F	S
	1	2	3	4	5	6
7	8	9	10	11	12	13
14	15	16	17	18	19	20
21	22	23	24	25	26	27
28	29	30	31			

FEBRUARY 2024						
S	M	T	W	T	F	S
				1	2	3
4	5	6	7	8	9	10
11	12	13	14	15	16	17
18	19	20	21	22	23	24
25	26	27	28	29		

MARCH 2024						
S	M	T	W	T	F	S
					1	2
3	4	5	6	7	8	9
10	11	12	13	14	15	16
17	18	19	20	21	22	23
24	25	26	27	28	29	30
31						

- Delayed Collection Due to Holidays
- Leaf & Yard Waste Collection (Urban areas only)
- Municipal Hazardous & Special Waste Days (x4)
- Christmas Tree Recycling Depots Open
- Bulky Item Collection Days (You must call Modern to request a pickup)